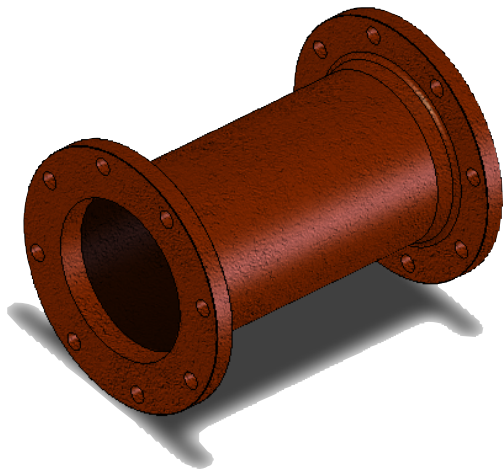
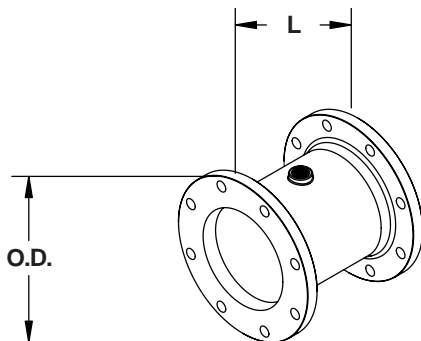
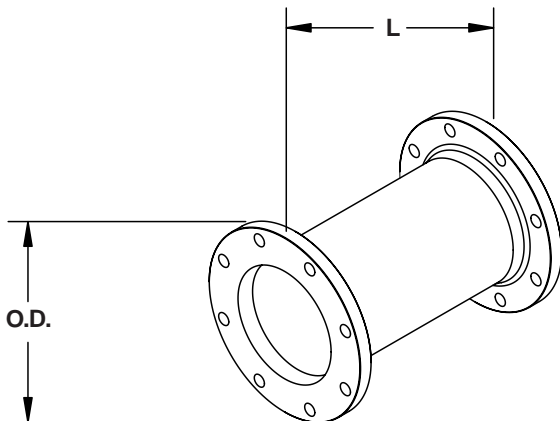
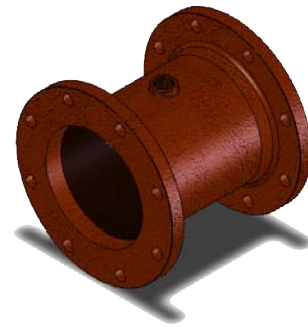


Ductile Iron Flanged Pipes

**UNITED
BRAND**



Integrally Cast Spools



Part Number	Size (ND)	Length	O.D.	BC	Weight (Approx.)	List Price
80F-0406-D	4"	6"	9.00	7.50	29.00	\$283.84
80F-0412-D		12"			35.92	\$283.64
80F-0418-D		18"			42.87	\$339.71
80F-0424-D		24"			49.79	\$367.29

80F-0606-D	6"	6"	11.00	9.50	41.10	\$337.61
80F-0612-D		12"			52.19	\$337.61
80F-0618-D		18"			63.28	\$679.88
80F-0624-D		24"			74.37	\$725.75

80F-0806-D	8"	6"	13.50	11.75	110.89	\$596.79
80F-0812-D		12"			127.16	\$596.79
80F-0818-D		18"			141.65	\$630.46
80F-0824-D		24"			157.04	\$661.07

Raised Boss w/1/2" ~1" NPT

87F-0412-D	4"		9.00	7.50	36.00	\$354.55
87F-0612-D	6"	12"	11.00	9.50	52.00	\$427.01
87F-0812-D	8"		13.50	11.75	127.16	\$745.98

Notes:

Flange Dimensions: In Accordance with ANSI B16.1 Class 125
 Material: AWWA Ductile Iron to ASTM A536 Grade 65-45-12
 Lining: Cement mortar lined with bitumen overlay in Accordance with AWWA C104
 Coating: Zinc rich red rust inhibitive primer
 Threads: To ANSI/ASME B1.20.1, Countersink to ASME B16.3

Note: Design subject to change without notice.

NAPAC, Inc.

229 Southbridge Street, Worcester, MA 01608
 Tel: (800) 807-2215 Fax: (800) 807-2214