

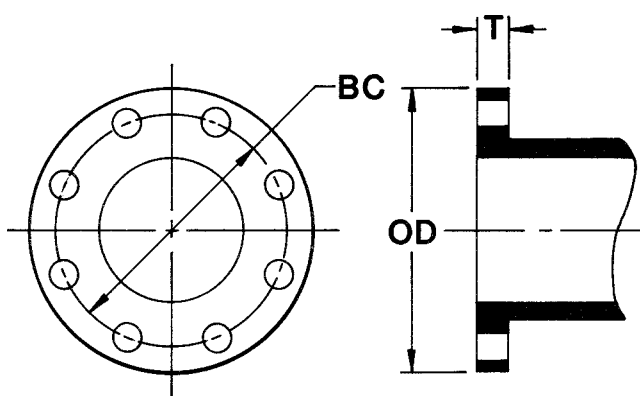
**NAPAC,
INC.**



***FLANGED
FITTINGS***

Flanges and Accessories
ANSI B16.1
Class 125/250

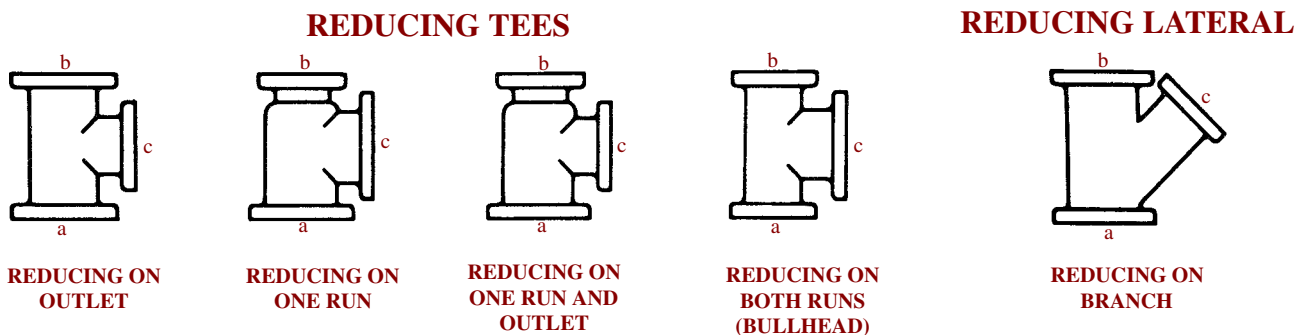
FLANGE DETAILS - Class 125



Size	O.D.	B.C.	T	Bolt Hole Dia.	Bolt Dia. & Length	No. of Bolts
2	6.00	4.50	5/8	3/4	5/8 x 2 1/2	4
2 1/2	7.00	5.00	11/16	3/4	5/8 x 2 1/2	4
3	7.50	6.00	3/4	3/4	5/8 x 2 1/2	4
4	9.00	7.50	15/16	3/4	5/8 x 3	8
5	10.00	8.50	15/16	7/8	3/4 x 3 1/2	8
6	11.00	9.50	1	7/8	3/4 x 3 1/2	8
8	13.50	11.75	1 1/8	7/8	3/4 x 3 1/2	8
10	14.25	11.25	1 3/16	1	7/8 x 4	12
12	19.00	17.00	1 1/4	1	7/8 x 4	12
14	21.00	18.75	1 3/8	1 1/8	1 x 4 1/2	12
16	23.50	21.25	1 7/16	1 1/8	1 x 4 1/2	16
18	25.00	22.75	1 9/16	1 1/4	1 1/8 x 5	16
20	27.50	25.00	1 11/16	1 1/4	1 1/8 x 5	20
24	32.00	29.50	1 7/8	1 3/8	1 1/4 x 5 1/2	20

All dimensional data in inches and lbs.

DESIGNATION of OUTLETS In accordance with ANSI B16.1



The largest opening establishes the basic size of a reducing fitting. The largest opening is named first, except for bullhead tees, which are reducing on both runs, and for double branch elbows where both branches are reducing. The outlet is the largest opening and named last in both cases.

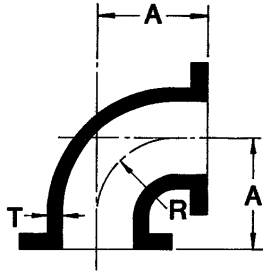
In designating the openings of reducing fittings, they should be read in the order indicated by the sequence of the letters a, b, c.

UNITED BRAND FITTINGS

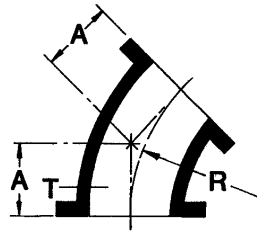
Our dedication to the mechanical piping industry has given us the opportunity to provide you with a quality line of flanged fittings exceeding the competition. Manufactured from high strength grey cast iron and ductile iron, our Flanged Fittings Series are available in 1" - 24" sizes in a variety of elbows, tees, crosses, laterals, reducers, and blind flanges. All are manufactured in accordance with ANSI B16.1, and all are available with special rust inhibitive primers and epoxy coatings.

ORDERS FAX 800-807-2214

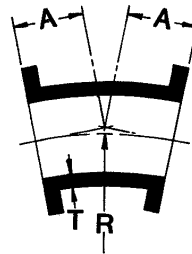
ELBOWS



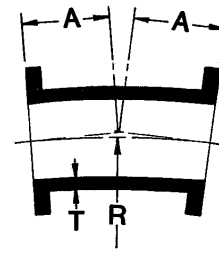
SERIES 10
90°



SERIES 11
45°



SERIES 12
22 1/2°



SERIES 13
11 1/4°

Size	90° Elbow				45° Elbow				22 1/2° Elbow				11 1/4° Elbow				T
	Part No.	A	R	Wgt.	Part No.	A	R	Wgt.	Part No.	A	R	Wgt.	Part No.	A	R	Wgt.	
2	10F-0202-G	4.5	3.0	14	11F-0202-G	2.5	2.4	12	-	-	-	-	-	-	-	-	.31
2 1/2	10F-025025-G	5	3.5	19	11F-025025-G	3.0	3.6	17	-	-	-	-	-	-	-	-	.31
3	10F-0303-G	5.5	4.0	25	11F-0303-G	3.0	3.6	20	12F-0303-G	3.0	7.6	20	13F-0303-G	3.0	15.25	20	.38
4	10F-0404-G	6.5	4.5	45	11F-0404-G	4.0	4.8	40	12F-0404-G	4.0	10.06	40	13F-0404-G	4.0	20.31	40	.50
5	10F-0505-G	7.5	5.5	52	11F-0505-G	4.5	6.0	45	-	-	-	-	-	-	-	-	.50
6	10F-0606-G	8.0	6.0	65	11F-0606-G	5.0	7.3	55	12F-0606-G	5.0	15.06	55	13F-0606-G	5.0	30.50	55	.56
8	10F-0808-G	9.0	7.0	105	11F-0808-G	5.5	8.4	90	12F-0808-G	5.5	17.62	90	13F-0808-G	5.5	35.50	90	.62
10	10F-1010-G	11.0	9.0	165	11F-1010-G	6.5	10.9	130	12F-1010-G	6.5	22.62	135	13F-1010-G	6.5	45.69	135	.75
12	10F-1212-G	12.0	10.0	235	11F-1212-G	7.5	13.3	195	12F-1212-G	7.5	27.62	205	13F-1212-G	7.5	55.81	205	.81
14*	10F-1414-D	14.0	11.5	290	11F-1414-D	7.5	12.06	220									.66
16*	10F-1616-D	15.0	12.5	370	11F-1616-D	8.0	13.25	280									.70
18*	10F-1818-D	16.5	14.0	450	11F-1818-D	8.5	14.50	325									.75
20*	10F-2020-D	18.0	15.5	580	11F-2020-D	9.5	16.88	430									.80
24*	10F-2424-D	22.0	18.5	900	11F-2424-D	11.5	18.12	630									.89

*14"~24" are made from high strength ductile iron to ANSI A21.10, AWWA C110, WWP 250.

ANSI B16.1 Class 125

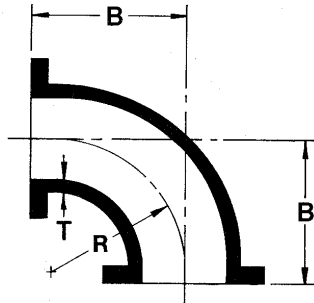
Size	Part No.	A	R	Wgt.	T
3 x 2 1/2	10F-0303-G	5.5	4.0	.25	.31
4 x 2 1/2	10F-0404-G	6.5	4.5	.45	.31
5 x 4	10F-0505-G	7.5	5.0	.50	.48
6 x 4	10F-0604-G	8.0	6.0	.56	.55
8 x 4	10F-0804-G	9.0	7.0	.62	.75
8 x 6	10F-0806-G	9.0	8.0	.62	.85
10 x 6	10F-1006-G	11.0	9.0	.75	1.35
12 x 4	10F-1204-G	12.0	10.0	.81	1.40
12 x 8	10F-1208-G	12.0	10.0	.81	1.80
14 x 12*	10F-1412-D	14.0	11.5	.66	2.70
16 x 14*	10F-1614-D	15.0	12.5	.70	3.30

SERIES 10R

*14"~24" are made from high strength ductile iron to ANSI A21.10, AWWA C110, WWP 250.

90° LONG RADIUS ELBOW

ANSI B16.1 Class 125



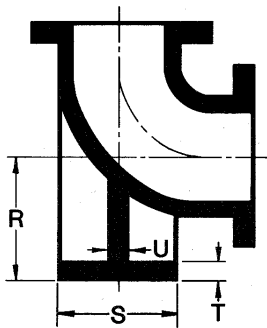
SERIES 15

Size	Part No.	B	R	T	Weight
3	15F-0303-G	7.5	6.0	.38	28
4	15F-0404-G	9.0	7.0	.50	48
6	15F-0606-G	11.5	9.5	.56	85
8	15F-0808-G	14.0	17.0	.62	145
10	15F-1010-G	16.5	14.0	.75	230
12	15F-1212-G	19.0	17.0	.81	350

Larger sizes thru 24" available upon request.

90° BASE ELBOW

ANSI B16.1 Class 125



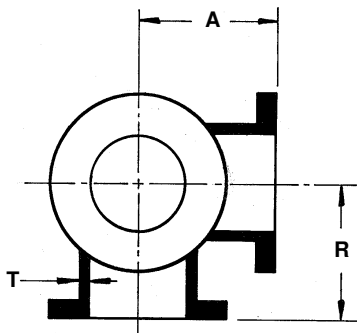
SERIES 16

Size	Part No.	R	S (Dia.)	T	U	Weight
3	16F-0303-G	4.0	5.0	.28	.50	36
4	16F-0404-G	5.5	6.0	.62	.50	55
6	16F-0606-G	7.0	7.0	.69	.62	85
8	16F-0808-G	8.38	9.0	.94	.88	145
10	16F-1010-G	9.75	9.0	.94	.88	210
12	16F-1212-G	11.25	11.0	1.0	1.0	300

Larger sizes thru 24" available upon request.

SIDE OUTLET 90° ELBOW

ANSI B16.1 Class 125

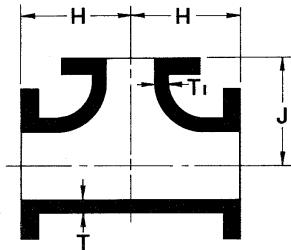


SERIES 18

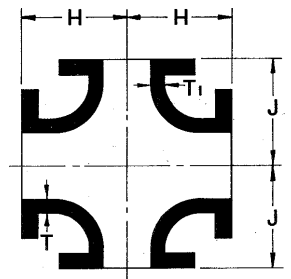
Size	Part No.	A	R	T	Weight
4	18F-0404-G	6.5	6.5	.50	60
6	18F-0606-G	8.0	8.0	.56	95
8	18F-0808-G	9.0	9.0	.62	150
10	18F-1010-G	11.0	11.0	.75	235
12	18F-1212-G	12.0	12.0	.81	335

Larger sizes thru 24" available upon request.

TEES & CROSSES



SERIES 20

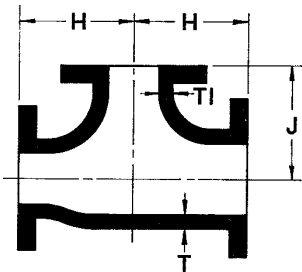


SERIES 35

Size	Part No.		H	J	T	T1	Weight	
	Tee	Cross					Tee	Cross
2	20F-0202-G	35F-0202-G	4.5	4.5	.31	-	20	30
2 1/2	20F-025025-G	35F-025025-G	5.0	5.0	.31	-	30	39
3 x 2	20F-0302-G	-	5.5	5.5	.38	.31	35	-
3 x 2 1/2	20F-03025-G	-	5.5	5.5	.38	.31	38	-
3	20F-0303-G	35F-0303-G	5.5	5.5	.38	-	40	50
4 x 2	20F-0402-G	-	6.5	6.5	.50	.31	50	-
4 x 2 1/2	20F-04025-G	-	6.5	6.5	.50	.31	55	-
4 x 3	20F-0403-G	-	6.5	6.5	.50	.38	60	-
4	20F-0404-G	35F-0404-G	6.5	6.5	.50	-	65	80
5	20F-0505-G	35F-0505-G	7.5	7.5	.50	-	85	105
6 x 2	20F-0602-G	-	8.0	8.0	.56	.31	86	-
6 x 3	20F-0603-G	-	8.0	8.0	.56	.38	85	-
6 x 4	20F-0604-G	35F-0604-G	8.0	8.0	.56	.50	90	110
6	20F-0606-G	35F-0606-G	8.0	8.0	.56	-	95	120
8 x 3	20F-0803-G	35F-0803-G	9.0	9.0	.62	.38	135	-
8 x 4	20F-0804-G	-	9.0	9.0	.62	.50	140	-
8 x 6	20F-0806-G	35F-0806-G	9.0	9.0	.62	.56	145	165
8	20F-0808-G	35F-0808-G	9.0	9.0	.62	-	155	195
10 x 3	20F-1003-G	35F-1003-G	11.0	11.0	.75	.38	200	-
10 x 4	20F-1004-G	-	11.0	11.0	.75	.50	205	-
10 x 6	20F-1006-G	-	11.0	11.0	.75	.56	215	-
10 x 8	20F-1008-G	-	11.0	11.0	.75	.62	225	-
10	20F-1010-G	35F-1010-G	11.0	11.0	.75	-	270	330
12 x 4	20F-1204-G	-	12.0	12.0	.81	.50	290	-
12 x 6	20F-1206-G	-	12.0	12.0	.81	.56	295	-
12 x 8	20F-1208-G	-	12.0	12.0	.81	.62	310	-
12 x 10	20F-1210-G	-	12.0	12.0	.81	.75	360	-
12	20F-1212-G	35F-1212-G	12.0	12.0	.81	-	385	460
14*	20F-1414-D	-	14.0	14.0	.66	-	435	-
16*	20F-1616-D	-	15.0	15.0	.70	-	550	-
18*	20F-1818-D	-	16.5	16.5	.75	-	665	-
20*	20F-2020-D	-	18.0	18.0	.80	-	855	-
24*	20F-2424-D	-	22.0	22.0	.89	-	1330	-

*14"~24" are made from high strength ductile iron to ANSI A21.10, AWWA C110, WWP 250.

REDUCING TEE (on Run and/or Branch)



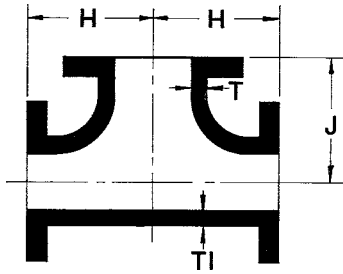
SERIES 26

Size	Part No.	H	J	T	T1	Weight
4 x 3 x 4	26F-0434-G	6.5	6.5	.50	.38	59
6 x 4 x 4	26F-0644-G	8.0	8.0	.56	.50	90
6 x 4 x 6	26F-0646-G	8.0	8.0	.56	.50	95
8 x 4 x 8	26F-0848-G	9.0	9.0	.62	.50	146
8 x 6 x 4	26F-0864-G	9.0	9.0	.62	.56	125
8 x 6 x 6	26F-0866-G	9.0	9.0	.62	.56	145
8 x 6 x 8	26F-0868-G	9.0	9.0	.62	.56	160
10 x 8 x 8	26F-1088-G	11.0	11.0	.75	.62	232
10 x 8 x 10	26F-10810-G	11.0	11.0	.75	.62	262
12 x 8 x 8	26F-1288-G	12.0	12.0	.81	.62	298
12 x 10 x 10	26F-121010-G	12.0	12.0	.81	.75	340
12 x 10 x 12	26F-121012-G	12.0	12.0	.81	.75	365

Larger sizes thru 24" available upon request.

BULLHEAD TEE

ANSI B16.1 Class 125



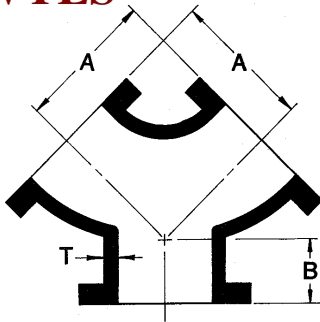
SERIES 27

Size	Part No.	H	J	T	T1	Weight
4 x 4 x 6	27F-0446-G	8.0	8.0	.50	.56	88
6 x 6 x 8	27F-0668-G	9.0	9.0	.56	.62	142
8 x 8 x 10	27F-08810-G	11.0	11.0	.62	.75	240
10 x 10 x 12	27F-101012-G	12.0	12.0	.75	.81	340

Larger sizes thru 24" available upon request.

TRUE WYES

ANSI B16.1 Class 125



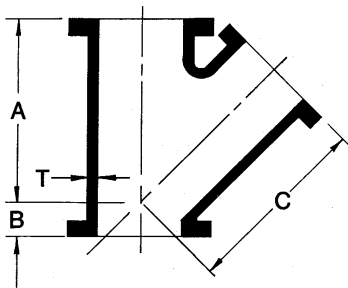
SERIES 32

Size	Part No.	A	B	T	Weight
4	32F-0404-G	6.5	3.0	.50	50
6	32F-0606-G	8.0	3.5	.56	80
8	32F-0808-G	9.0	4.5	.62	125

Larger sizes thru 24" available upon request.

LATERAL WYES

ANSI B16.1 Class 125



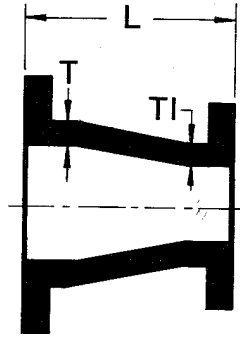
SERIES 30

Size	Part No.	A	B	C	T	T1	Weight
3	30F-0303-G	10.0	3.0	10.0	.38	-	45
4	30F-0404-G	12.0	3.0	12.0	.50	-	75
6	30F-0606-G	14.5	3.5	14.5	.56	-	120
6 x 4	30F-0604-G	14.5	3.5	14.5	.56	.50	105
8	30F-0808-G	17.5	4.5	17.5	.62	-	200
8 x 6	30F-0806-G	17.5	4.5	17.5	.62	.56	175
10	30F-1010-G	20.5	5.0	20.5	.75	-	335
12	30F-1212-G	24.5	5.5	24.5	.81	-	515

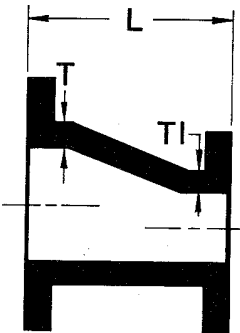
Larger sizes thru 24" available upon request.

CONCENTRIC & ECCENTRIC REDUCERS

ANSI B16.1 Class 125



(CONCENTRIC)
SERIES 50



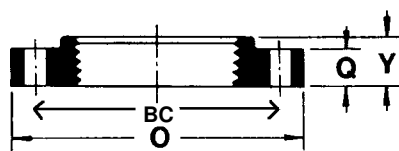
(ECCENTRIC)
SERIES 51

Size	Part No. (Concentric)	Part No. (Eccentric)	L	T	T1	Weight
2 x 1 1/2	50F-02015-G	51F-02015-G	5.5	.31	.30	12
2 1/2 x 2	50F-02502-G	51F-02502-G	5.5	.31	.31	14
3 x 1 1/2	50F-03015-G	51F-03015-G	6	.38	.30	15
3 x 2	50F-0302-G	51F-0302-G	6	.38	.31	16
3 x 2 1/2	50F-03025-G	51F-03025-G	6	.38	.31	20
4 x 2	50F-0402-G	51F-0402-G	7	.50	.31	25
4 x 2 1/2	50F-04025-G	51F-04025-G	7	.50	.31	28
4 x 3	50F-0403-G	51F-0403-G	7	.50	.38	30
5 x 2 1/2	50F-05025-G	51F-05025-G	8	.50	.31	31
5 x 3	50F-0503-G	51F-0503-G	8	.50	.38	32
5 x 4	50F-0504-G	51F-0504-G	8	.50	.50	39
6 x 2 1/2	50F-06025-G	51F-06025-G	9	.56	.31	38
6 x 3	50F-0603-G	51F-0603-G	9	.56	.38	40
6 x 4	50F-0604-G	51F-0604-G	9	.56	.50	45
6 x 5	50F-0605-G	51F-0605-G	9	.56	.50	50
8 x 4	50F-0804-G	51F-0804-G	11	.62	.50	65
8 x 5	50F-0805-G	51F-0805-G	11	.62	.50	70
8 x 6	50F-0806-G	51F-0806-G	11	.62	.56	75
10 x 4	50F-1004-G	51F-1004-G	12	.75	.50	85
10 x 5	50F-1005-G	51F-1005-G	12	.75	.50	88
10 x 6	50F-1006-G	51F-1006-G	12	.75	.56	90
10 x 8	50F-1008-G	51F-1008-G	12	.75	.62	110
12 x 4	50F-1204-G	51F-1204-G	14	.81	.50	120
12 x 6	50F-1206-G	51F-1206-G	14	.81	.56	130
12 x 8	50F-1208-G	51F-1208-G	14	.81	.62	145
12 x 10	50F-1210-G	51F-1210-G	14	.81	.75	170
14 x 6*	50F-1406-D	51F-1406-G	16	.66	.55	155
14 x 8*	50F-1408-D	51F-1408-G	16	.66	.60	175
14 x 10*	50F-1410-D	51F-1410-G	16	.66	.68	190
14 x 12*	50F-1412-D	51F-1412-G	16	.66	.75	220
16 x 6*	50F-1606-D	51F-1606-G	18	.70	.55	190
16 x 8*	50F-1608-D	51F-1608-G	18	.70	.60	210
16 x 10*	50F-1610-D	51F-1610-G	18	.70	.68	235
16 x 12*	50F-1612-D	51F-1612-G	18	.70	.75	265
16 x 14*	50F-1614-D	51F-1614-G	18	.70	.66	280
18 x 8*	50F-1808-D	51F-1808-G	19	.75	.60	240
18 x 10*	50F-1810-D	51F-1810-G	19	.75	.68	265
18 x 12*	50F-1812-D	51F-1812-G	19	.75	.75	295
18 x 14*	50F-1814-D	51F-1814-G	19	.75	.66	310
18 x 16*	50F-1816-D	51F-1816-G	19	.75	.70	340
20 x 10*	50F-2010-D	51F-2010-G	20	.80	.68	310
20 x 12*	50F-2012-D	51F-2012-G	20	.80	.75	345
20 x 14*	50F-2014-D	51F-2014-G	20	.80	.66	355
20 x 16*	50F-2016-D	51F-2016-G	20	.80	.70	390
20 x 18*	50F-2018-D	51F-2018-G	20	.80	.75	410
24 x 12*	50F-2412-D	51F-2412-G	24	.89	.75	480
24 x 14*	50F-2414-D	51F-2414-G	24	.89	.66	490
24 x 16*	50F-2416-D	51F-2416-G	24	.89	.70	525
24 x 18*	50F-2418-D	51F-2418-G	24	.89	.75	550
24 x 20*	50F-2420-D	51F-2420-G	24	.89	.80	590

*14"~24" are made from high strength ductile iron to ANSI A21.10, AWWA C110, WWP 250.

STANDARD COMPANION FLANGE (Cast Iron)

ANSI B16.1 Class 125



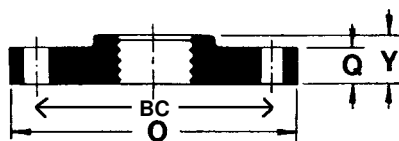
SERIES 306

Nominal Size	Product No.	BC	O	Q	Y	Bolt Holes		Wgt.
						No.	Size	
1	306-100-0425	3.12	4 1/4	7/16	11/16	4	0.62	1.75
1 1/4	306-125-0463	3.50	4 5/8	1/2	13/16	4	0.62	2
1 1/2	306-150-0500	3.88	5	9/16	7/8	4	0.62	2.25
2	306-200-0600	4.75	6	5/8	1	4	0.75	4
2 1/2	306-250-0700	5.50	7	11/16	1 1/8	4	0.75	6
3	306-300-0750	6.00	7 1/2	3/4	1 3/16	4	0.75	7.63
3 1/2	306-350-0850	7.00	8 1/2	13/16	1 1/4	8	0.75	9.50
4	306-400-0900	7.50	9	15/16	1 5/16	8	0.75	11.75
5	306-500-1000	8.50	10	15/16	1 7/16	8	0.88	14
6	306-600-1100	9.50	11	1	1 9/16	8	0.88	16.50
8	306-800-1350	11.75	13 1/2	1 1/8	1 3/4	8	0.88	26
10	306-1000-1600	14.25	16	1 3/16	1 15/16	12	1.00	38
12	306-1200-1900	17.00	19	1 1/4	2 3/16	12	1.00	51

Larger sizes thru 24" available upon request.

REDUCING COMPANION FLANGE (Cast Iron)

ANSI B16.1 Class 125



SERIES 316

Nominal Size		Product No.	Thread Size	BC	O	Q	Y	Bolt Holes		Weight
Pipe x O.D.	Flg. x Pipe							No.	Size	
1 x 5	1 1/2 x 1	316-100-0500	1				11/16	4	0.62	2.75
1 1/4 x 5	1 1/2 x 1 1/4	316-125-0500	1 1/4	3.88	5	9/16	13/16	4	0.62	2.50
1 x 6	2 x 1	316-100-0600	1				11/16	4	0.75	5.00
1 1/4 x 6	2 x 1 1/4	316-125-0600	1 1/4	4.75	6	5/8	13/16	4	0.75	4.75
1 1/2 x 6	2 x 1 1/2	316-150-0600	1 1/2				7/8	4	0.75	4.50
1 1/2 x 7	2 1/2 x 1 1/2	316-150-0700	1 1/2				7/8	4	0.75	7.00
2 x 7	2 1/2 x 2	316-200-0700	2	5.50	7	11/16	1	4	0.75	6.75
1 x 7 1/2	3 x 1	316-100-0750	1				13/16	4	0.75	9.00
1 1/2 x 7 1/2	3 x 1 1/2	316-150-0750	1 1/2				7/8	4	0.75	8.75
2 x 7 1/2	3 x 2	316-200-0750	2	6.00	7 1/2	3/4	1	4	0.75	8.50
2 1/2 x 7 1/2	3 x 2 1/2	316-250-0750	2 1/2				1 1/8	4	0.75	8.00
1 1/2 x 9	4 x 1 1/2	316-150-0900	1 1/2				1	8	0.75	14.75
2 x 9	4 x 2	316-200-0900	2				1	8	0.75	14.00
2 1/2 x 9	4 x 2 1/2	316-250-0900	2 1/2	7.50	9	15/16	1 1/8	8	0.75	13.50
3 x 9	4 x 3	316-300-0900	3				1 3/16	8	0.75	12.75
2 x 10	5 x 2	316-200-1000	2					8	0.88	
3 x 10	5 x 3	316-300-1000	3	8.50	10	15/16	1 3/16	8	0.88	17.00
4 x 10	5 x 4	316-400-1000	4				1 5/16	8	0.88	16.00
1 1/2 x 11	6 x 1 1/2	316-150-1100	1 1/2				1 1/16	8	0.88	27.00
2 x 11	6 x 2	316-200-1100	2				1 1/16	8	0.88	26.00
2 1/2 x 11	6 x 2 1/2	316-250-1100	2 1/2				1 1/8	8	0.88	25.00
3 x 11	6 x 3	316-300-1100	3	9.50	11	1	1 3/16	8	0.88	23.00
4 x 11	6 x 4	316-400-1100	4				1 5/16	8	0.88	21.00
5 x 11	6 x 5	316-500-1100	5				1 7/16	8	0.88	19.00
2 x 13 1/2	8 x 2	316-200-1350	2				1 3/16	8	0.88	44.00
3 x 13 1/2	8 x 3	316-300-1350	3				1 3/16	8	0.88	40.00
4 x 13 1/2	8 x 4	316-400-1350	4	11.75	13 1/2	1 1/8	1 5/16	8	0.88	37.00
5 x 13 1/2	8 x 5	316-500-1350	5				1 7/16	8	0.88	34.00
6 x 13 1/2	8 x 6	316-600-1350	6				1 9/16	8	0.88	31.00
2 x 16	10 x 2	316-200-1600	2				1 15/16			61.00
6 x 16	10 x 6	316-600-1600	6	14.25	16	1 3/16	1 15/16	12	1.00	53.00
8 x 16	10 x 8	316-800-1600	8				1 15/16			50.00
2 x 19	12 x 2	316-200-1900	2				2 3/16			84.00
8 x 19	12 x 8	316-800-1900	8	17.00	19	1 1/4	2 3/16	12	1.00	81.00
10 x 19	12 x 10	316-1000-1900	10				2 3/16			72.00

Larger sizes thru 24" available upon request.